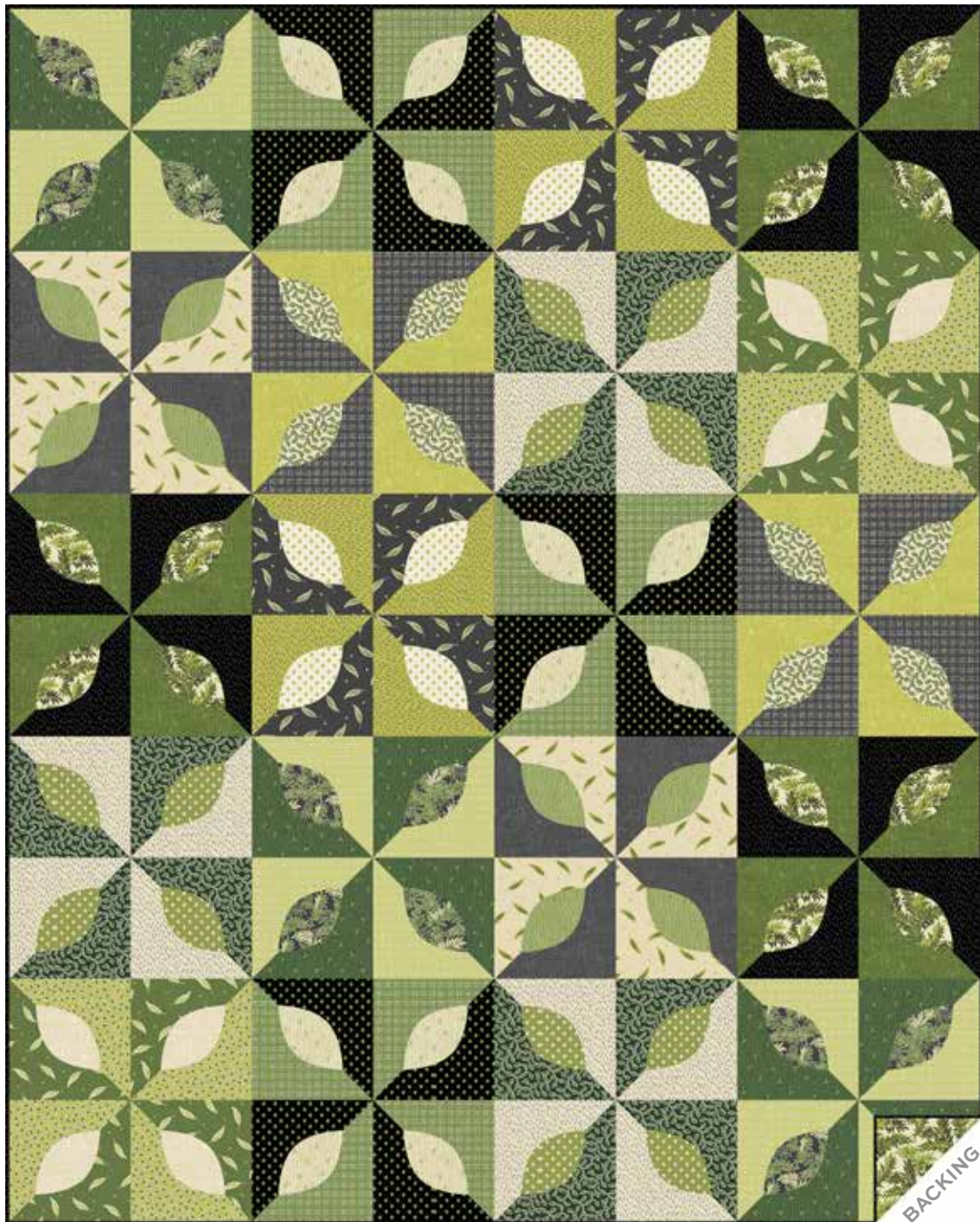


# Green Leaves

ANDOVER FABRICS



Summer Leaves Quilt designed by: **Janet Houts**

Quilt Size: **64" x 80"** • Skill Level: **Confident Beginner**

# Summer Leaves Quilt

Introducing Andover Fabrics new collection: **GREEN LEAVES** by Andover Fabrics

Quilt designed by Janet Houts

Quilt finishes 64" x 80"

20 Blocks: 16" x 16"

*Because it symbolizes nature, green is known for its naturally soothing qualities that can diffuse anxiety. Beige greens and pale yellow-greens are the most stress-reducing shades in the green family. The appliquéd leaves add delightful curves to the patchwork.*

## Cutting Directions

**Note:** Read assembly directions before cutting patches. All measurements are cut sizes and include ¼" seam allowances. WOF designates the width of fabric from selvedge to selvedge (approximately 42" wide).

**4 Lt. 5/8** From each:  
Cut (6) squares 8 7/8" (or 9") for HST  
(Read Step 2 before cutting)

**4 Dk. 5/8** From each:  
Cut (6) squares 8 7/8" (or 9") for HST

**4 Lt. 3/8** From each:  
Cut (4) squares 8 7/8" (or 9") for HST

**4 Dk. 3/8** From each:  
Cut (4) squares 8 7/8" (or 9") for HST

**Leaves** From each:  
Cut (8) leaves

**4 fat 1/4** From each:  
Cut (12) leaves

**Binding**  
Cut (8) strips 2 1/2" x WOF for binding

**Backing**  
Cut (2) lengths 37" x 90", pieced to fit quilt top with overlap on all sides

**When making the blocks, refer to these labels and the list of fabrics on the last page of the pattern.**

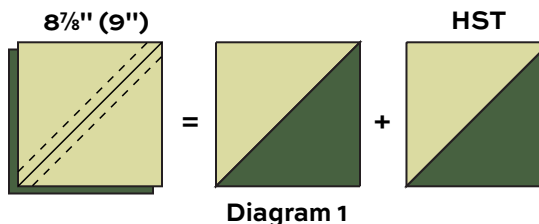
<b>A</b> 1329-K	<b>B</b> 1329-L	<b>C</b> 1330-G	<b>D</b> 1330-K
<b>E</b> 1330-L	<b>F</b> 1331-G	<b>G</b> 1331-K	<b>H</b> 1331-L
<b>I</b> 1332-G	<b>J</b> 1332-L	<b>K</b> 1332-V	<b>L</b> 1333-G
<b>M</b> 1333-K	<b>N</b> 1333-V	<b>O</b> 1334-G	<b>P</b> 1334-K
<b>Q</b> 1334-L	<b>R</b> 1335-K	<b>S</b> 1335-L	<b>T</b> 1335-V
<b>U</b> 1336-G	<b>V</b> 1336-K	<b>W</b> 1336-L	<b>X</b> 1336-V

## Fabric Requirements

		<b>Yardage</b>	<b>Fabric</b>
<b>4 Lt. 5/8</b>	blocks	5/8 yard ea.	Fabrics L, N, S, U
<b>4 Dk. 5/8</b>	blocks	5/8 yard ea.	Fabrics G, I, P, R
<b>4 Lt. 3/8</b>	blocks	3/8 yard ea.	Fabrics E, F, T, X
<b>4 Dk. 3/8</b>	blocks	3/8 yard ea.	Fabrics C, D, M, V
<b>Leaves</b>	leaves	fat 1/4 ea.	Fabrics H, K, Q, W
<b>4 fat 1/4</b>	leaves	fat 1/4 ea.	Fabrics A, B, J, O
<b>Binding</b>		5/8 yard	Fabric R
<b>Backing</b>		5 yards	Fabric B

## Making the Quilt

1. The directions result in 2 or 3 blocks in each color combination. However, feel free to mix up the lights and darks to make your blocks unique.
2. The blocks are made with half-square triangles (HST). Use your favorite method to make HST that finish 8", or follow these directions. Squares cut 9" will be trimmed after stitching. Cut the squares 8 7/8" if you do not wish to trim later. Draw a diagonal line on the wrong side of the light squares. With right sides together, position a marked square on top of a darker square. Stitch 1/4" on each side of the diagonal line (Diagram 1). Cut apart on the drawn line. Trim the square to 8 1/2" if needed. Press the seam allowance OPEN to reduce the bulk in the seam. Make 4 HST alike for each block, referring to the block diagrams for fabric combinations.

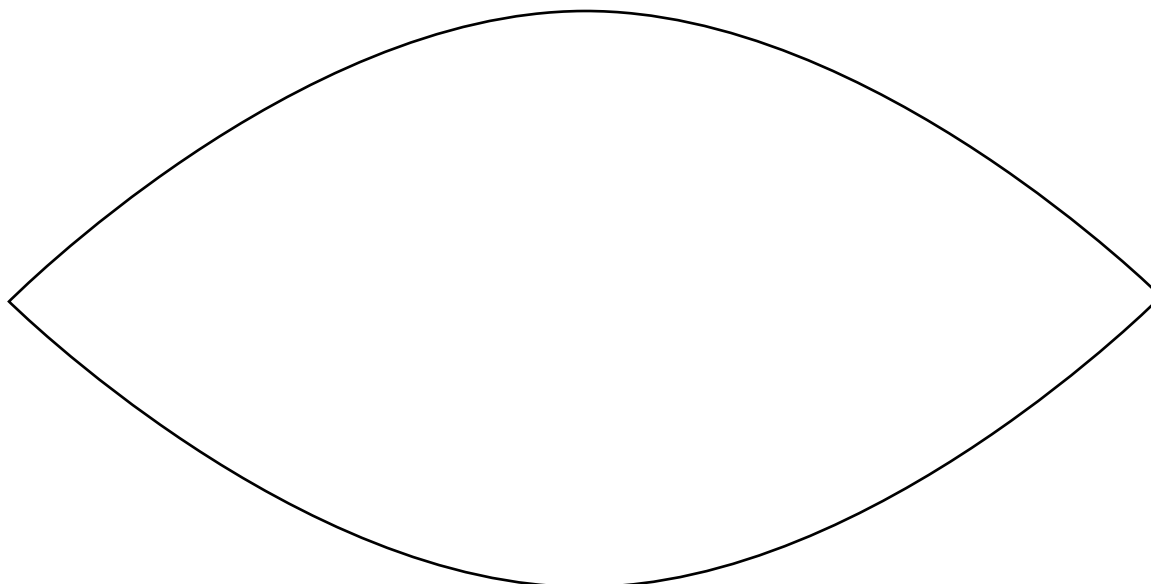
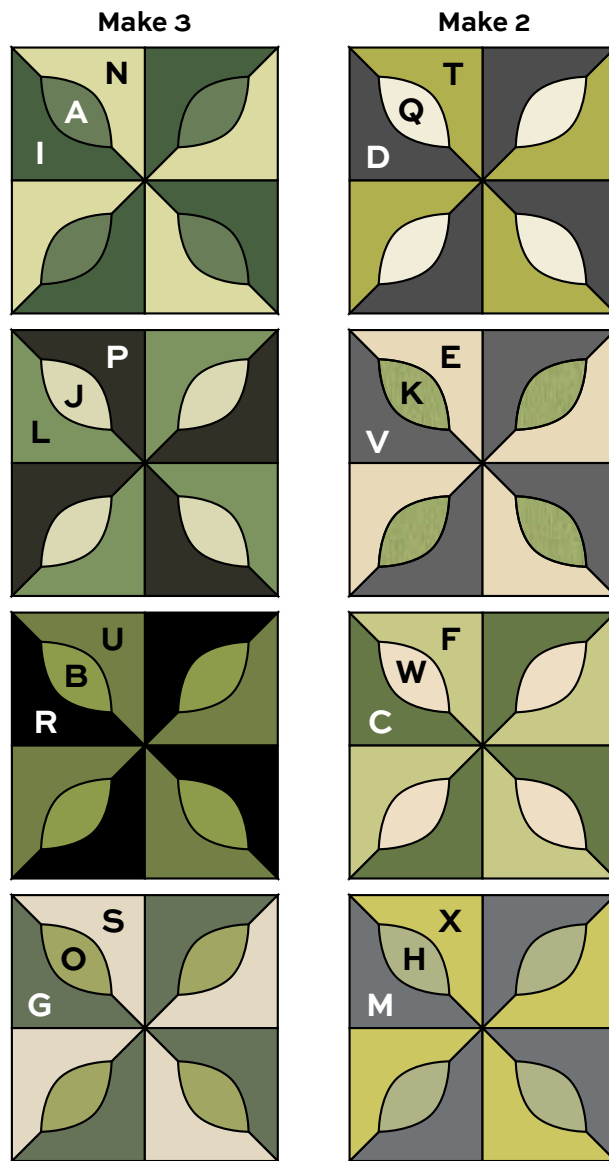


# Summer Leaves Quilt

3. Join 4 HST to make each block, noting orientation of the light and dark triangles. To duplicate the quilt shown, make the number of blocks indicated in the diagrams. Or, feel free to make different combinations. Make a total of 20 blocks.
4. These directions are for fusible appliqué. If you wish to stitch the raw edge of the appliqué, use a lightweight fusible webbing. If you do not plan to stitch it, use a heavyweight fusible. On the paper side of the fusible webbing, trace the leaf. Cut around the leaf loosely. Follow manufacturer's directions to fuse the webbing to the back side of the appropriate leaf fabric. Cut out along the lines. Position a leaf on each quarter of the block, aligning the leaf points on the seams. Machine stitch the edge of the leaf as you desire. Repeat with all 20 blocks.
5. Referring to the Quilt Assembly, position the blocks in 5 rows of 4 blocks each. Once you are satisfied with the arrangement, join the blocks into rows. Press seam allowances in opposite directions in alternating rows. Join the rows.

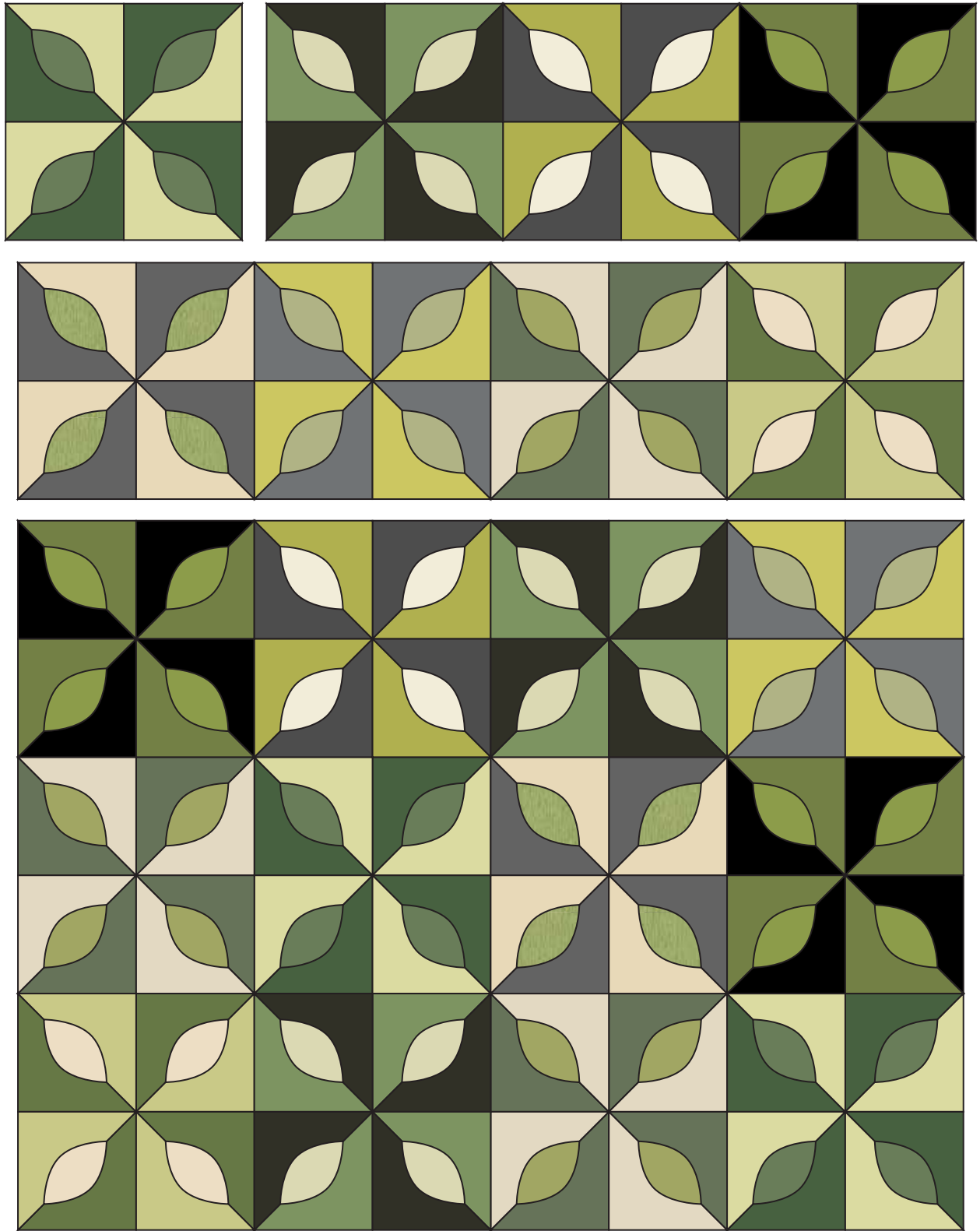
## Finishing the Quilt

6. Layer the quilt with batting and backing and baste. Quilt in the ditch around patches and leaves. Bind to finish the quilt.



# Summer Leaves Quilt

---



Quilt Assembly

# Green Leaves ANDOVER FABRICS



1329-K



1329-L



1330-G



1330-K



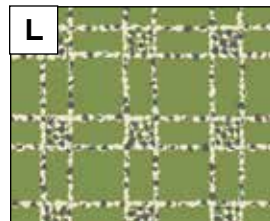
1330-L



1331-G



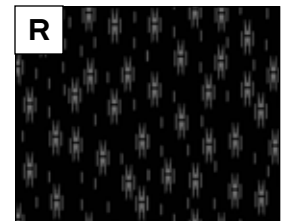
1332-G



1333-G



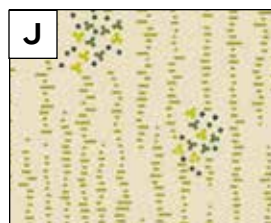
1334-G



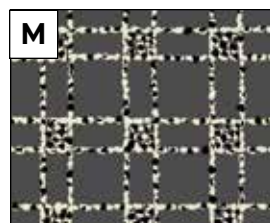
1335-K



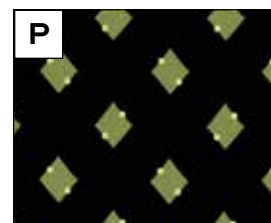
1331-K



1332-L



1333-K



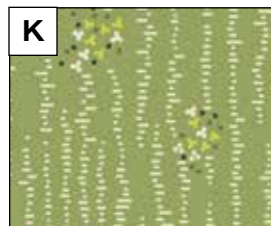
1334-K



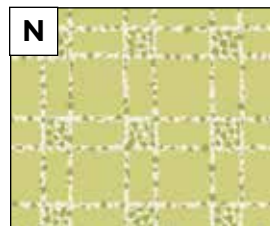
1335-L



1331-L



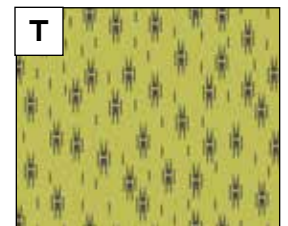
1332-V



1333-V



1334-L



1335-V



1336-G



1336-K



1336-L



1336-V

All fabrics are used in quilt pattern. Fabrics shown are 75% of actual size.